

Recommended books for future reference

Cascading Style Sheets – The Definitive Guide by Eric Meyer

Recommended websites

http://www.w3schools.com/css/css_reference.asp

<http://www.w3c.org>

<http://www.ericmeyeroncss.com>

<http://css.maxdesign.com.au/index.htm>

Introduction

Dreamweaver allows various options for creating, attaching/linking CSS documents. You may create/link

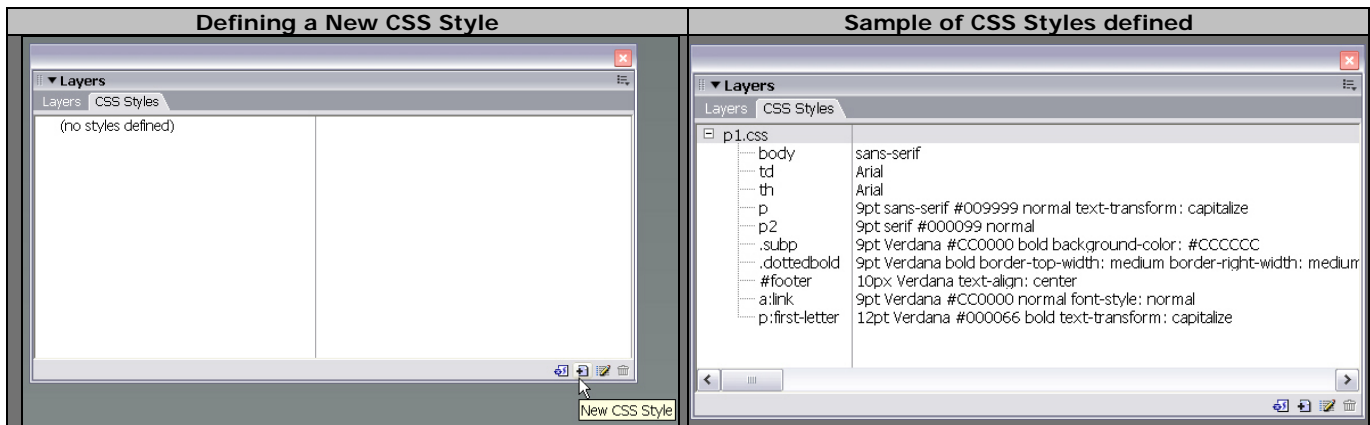
1. A new CSS document from Ctrl N (PCs)/Cmd N (Macs) >Select CSS
2. Use CSS Template provided by DW (NOT advisable if you are a new CSS designer)
3. Attach/link an existing CSS document
4. Create embedded or inline CSS within the HTML document from the insert menu or property inspector panel
5. And custom hand coding (Code Hints panel pops up as a guide)
6. @import derivative – to be discussed at a later time when we work with multiple CSS documents
7. The list goes on....

The options are again depends on the individual's choice of work flow. We will limit our class hands on lecture to one/two ways to avoid confusion.

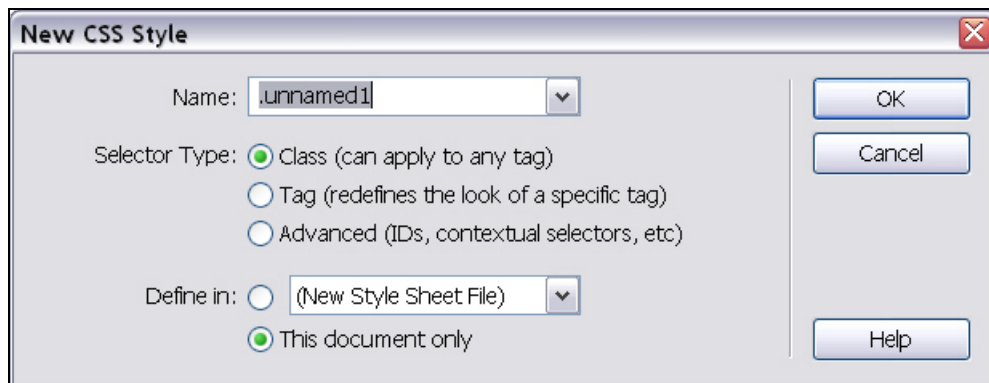
Creating Style Sheets in Dreamweaver 8 application from the Menu & panels option/s

Click on Window>CSS Styles

Select new CSS styles from panel (see diagram)>Click on icon



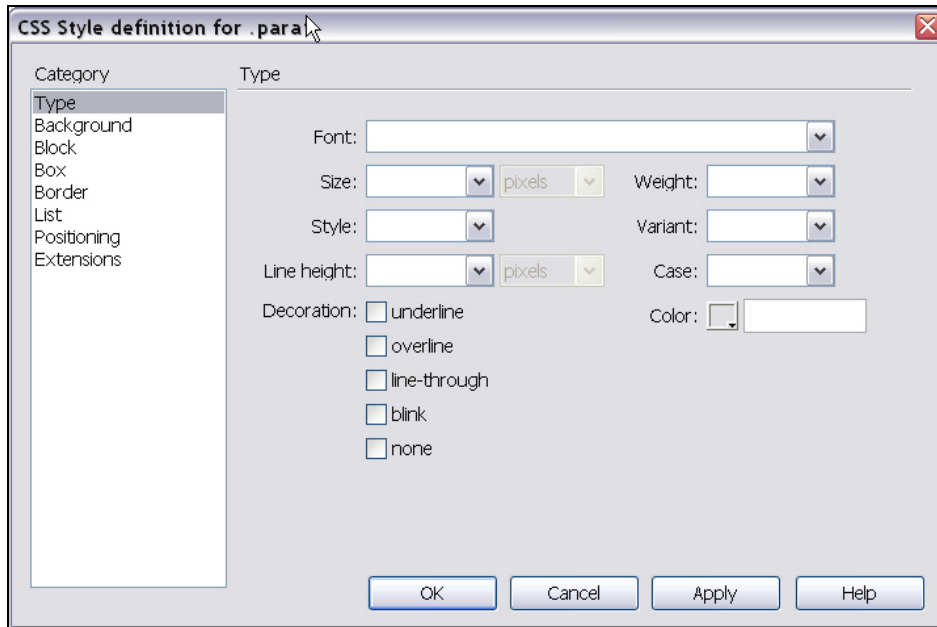
The new CSS style panel offers an option for creating different CSS rules or applications (see p7 for guidelines)



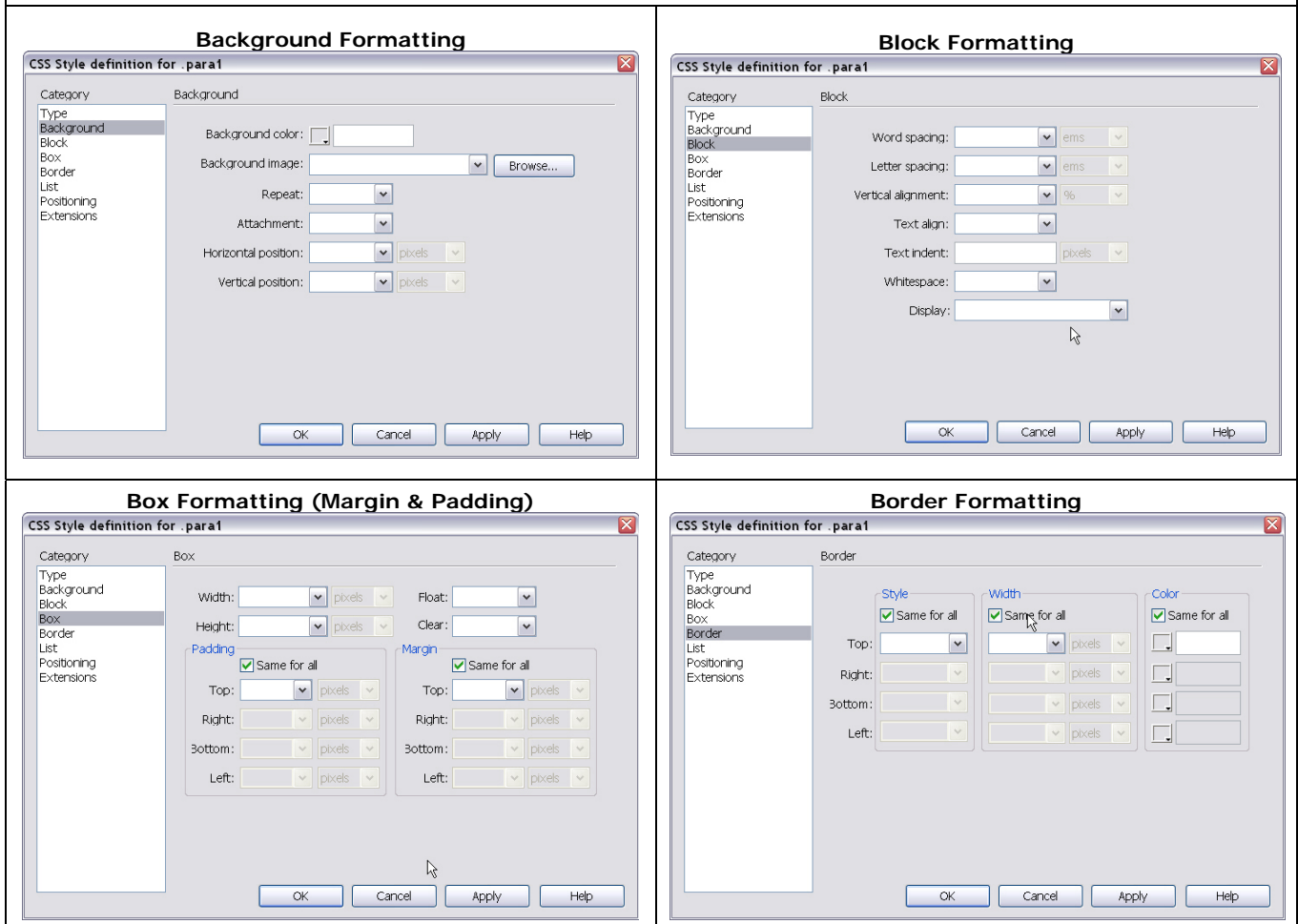
Embedded style sheets – Example how to create a class

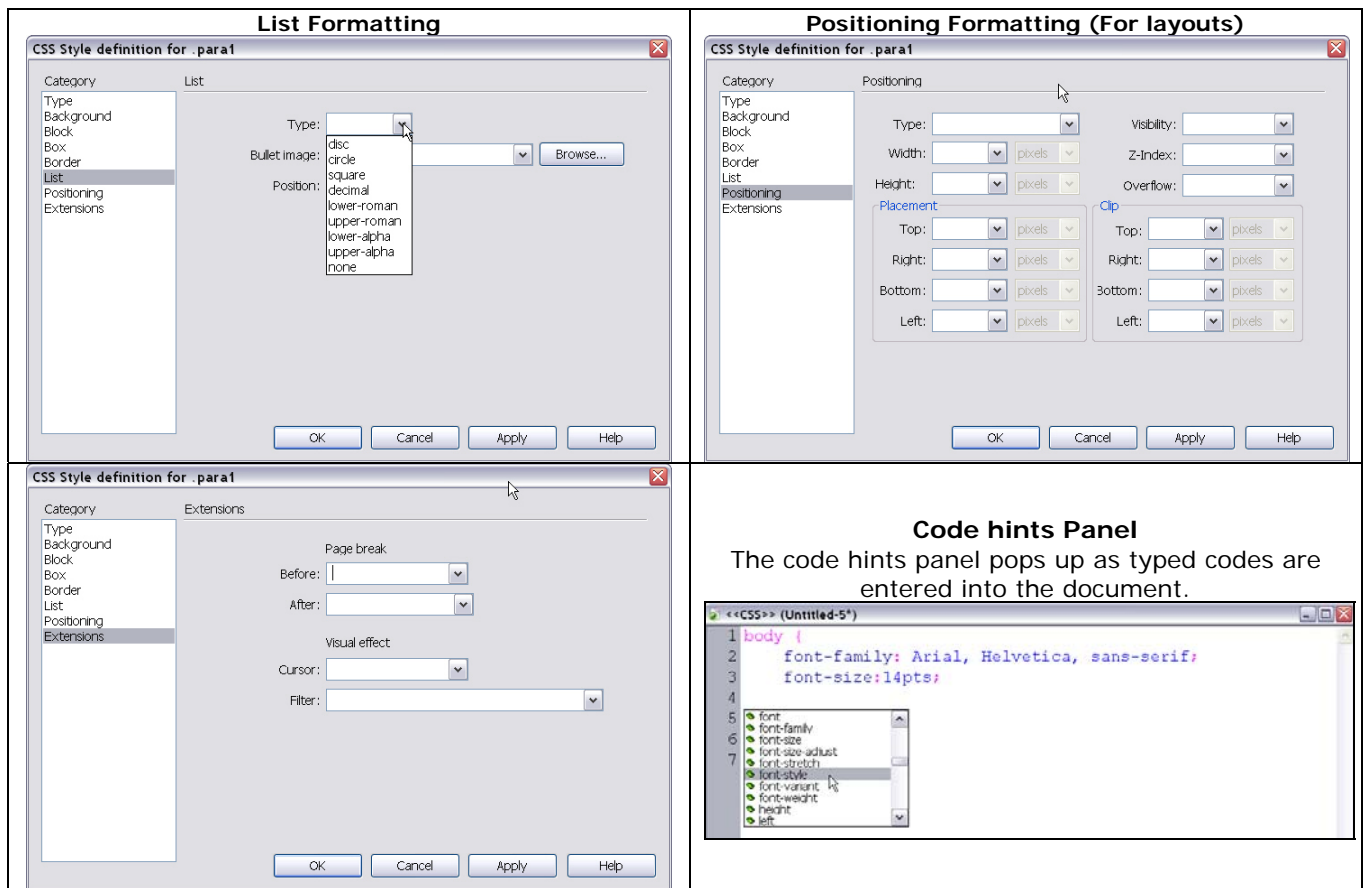
>Type .para1 in the Name field

>Click OK, and another panel called CSS Style definition for .para1 pops up. This is where you would define your type property if Category Type is selected.



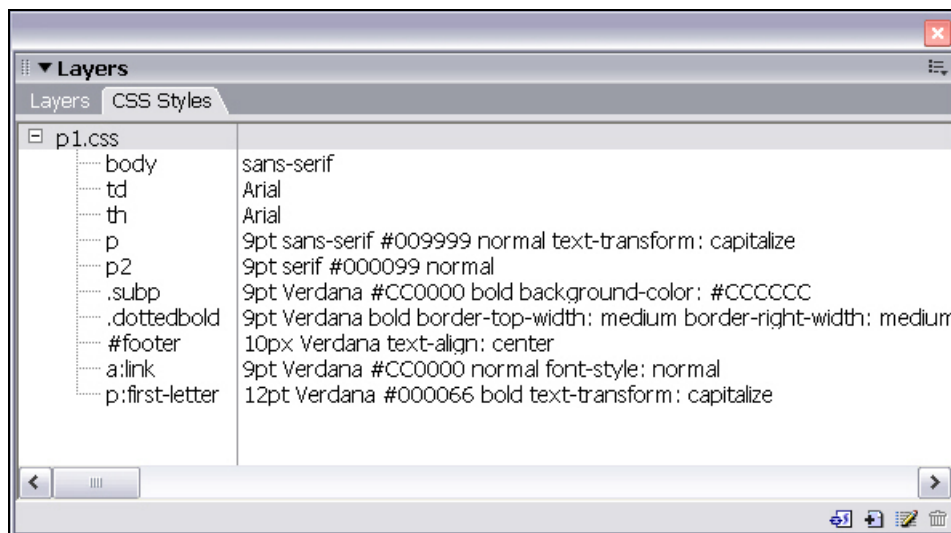
View the following screenshots of the other options to be discussed later





Options for editing CSS styles from Dreamweaver 8 property Menu (Use the CSS reference to view options available)

1. Code view
2. Mouse over the CSS document or tag from the CSS Styles panel>PCs- Right mouse click/Macs- Ctrl Click to edit the CSS using panel options
3. Select the tag you want to edit & Click on the Edit icon (pencil) at the bottom of the CSS panel



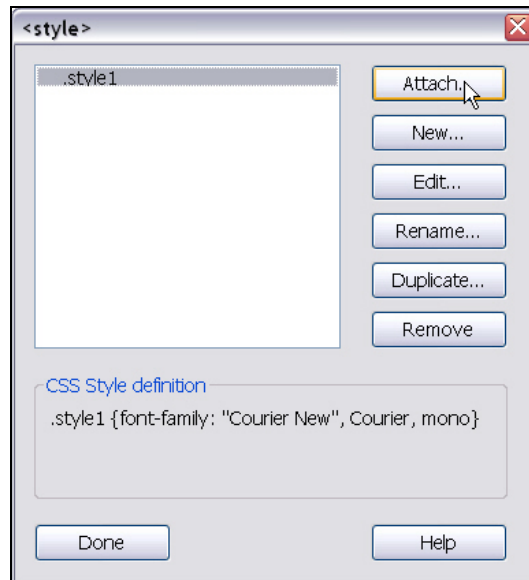
Creating inline styles

By default when text is typed in or formatted in Dreamweaver, style tags are formed as shown below. Example `<p class="style1">Text selected & Formatted</p>`

Linking/Attaching External style sheets to HTML documents

Click on Property Inspector Panel > Manage Style

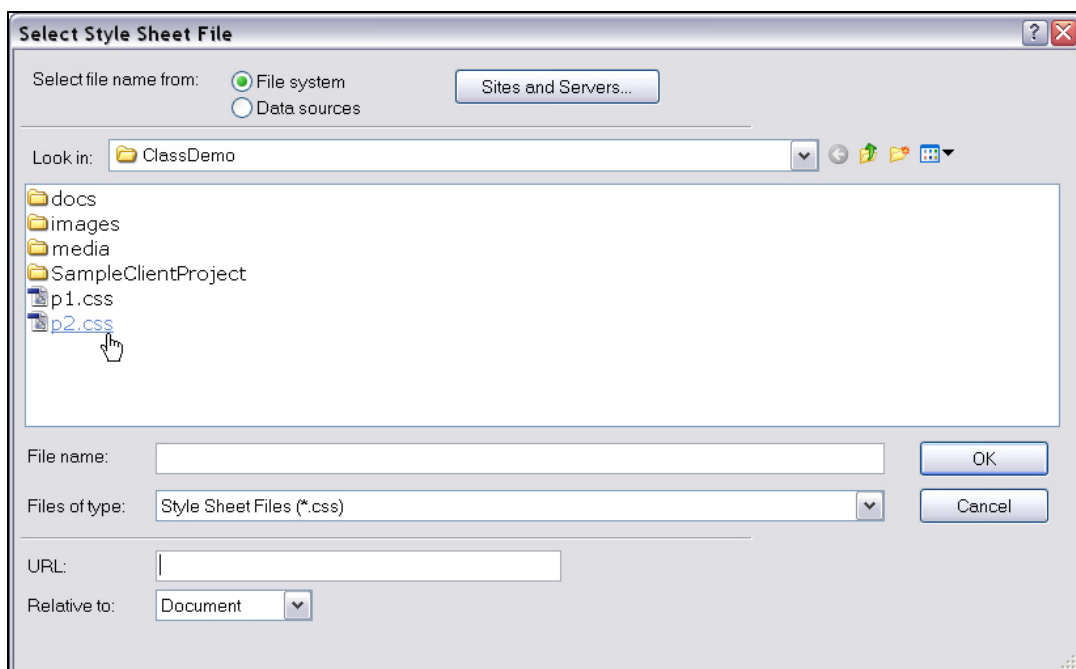
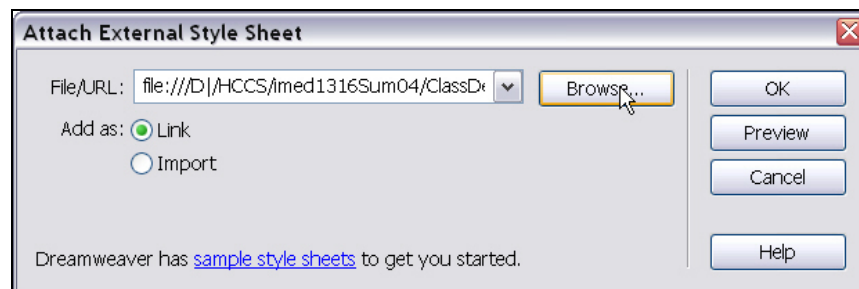
Select Attach from <style> panel (see below)



In the File/URL select the location of your CSS document

For option on Add as: Select Link

Click OK for both panels below once you have located your external CSS document

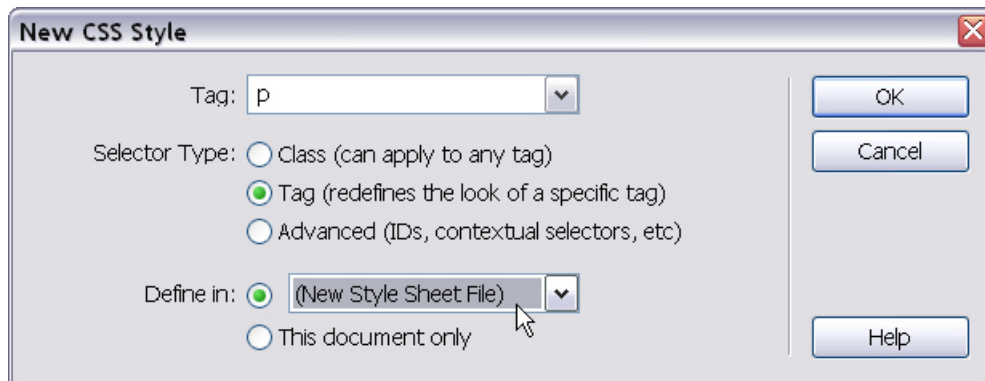


Creating and external CSS sheet

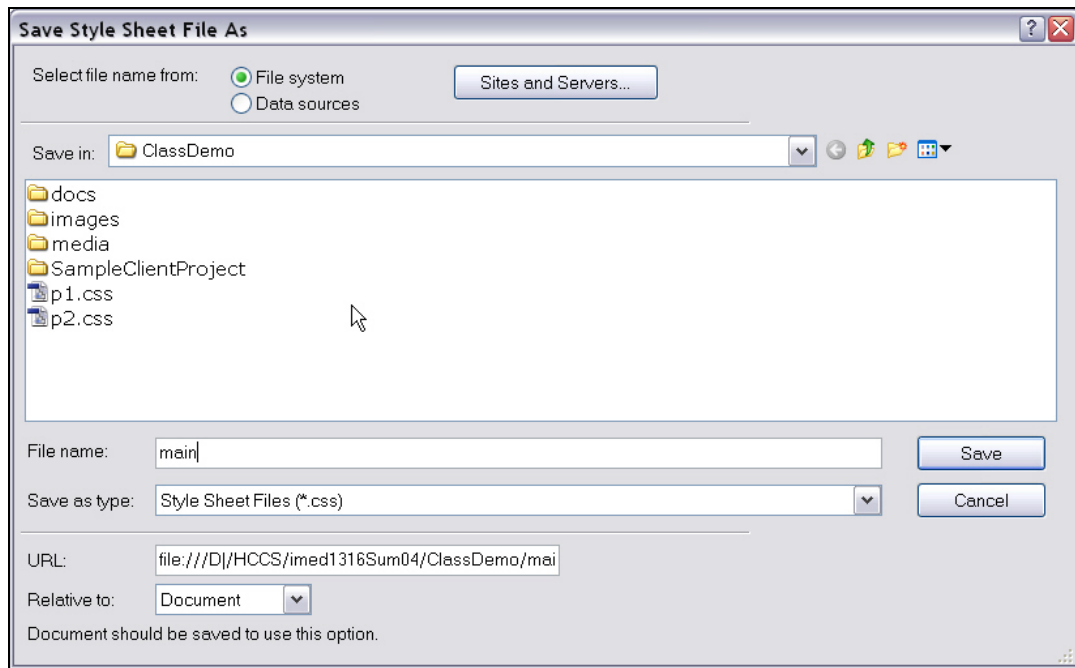
From the Property Inspector>Select Styles>Manage Styles
Select NEW from the Edit Style Sheet panel



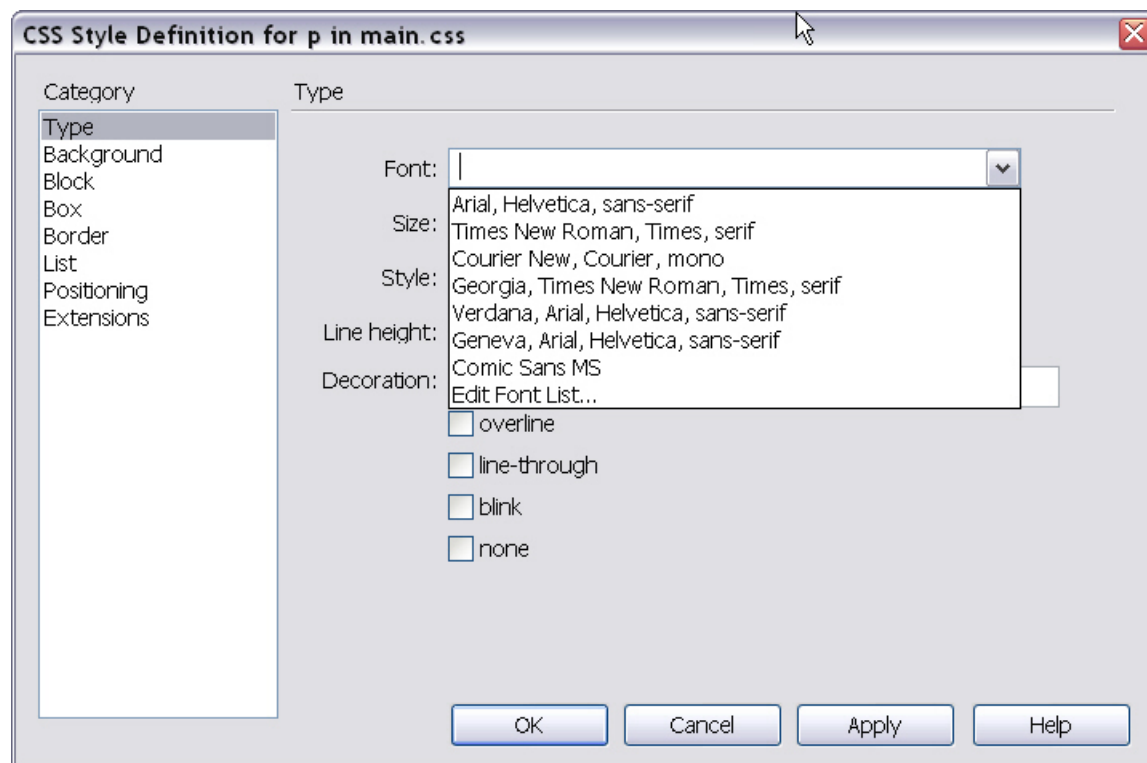
Example, to redefine the <p> tag, select the options given in the diagram below and click on OK



Save your style sheet as example "main.css"



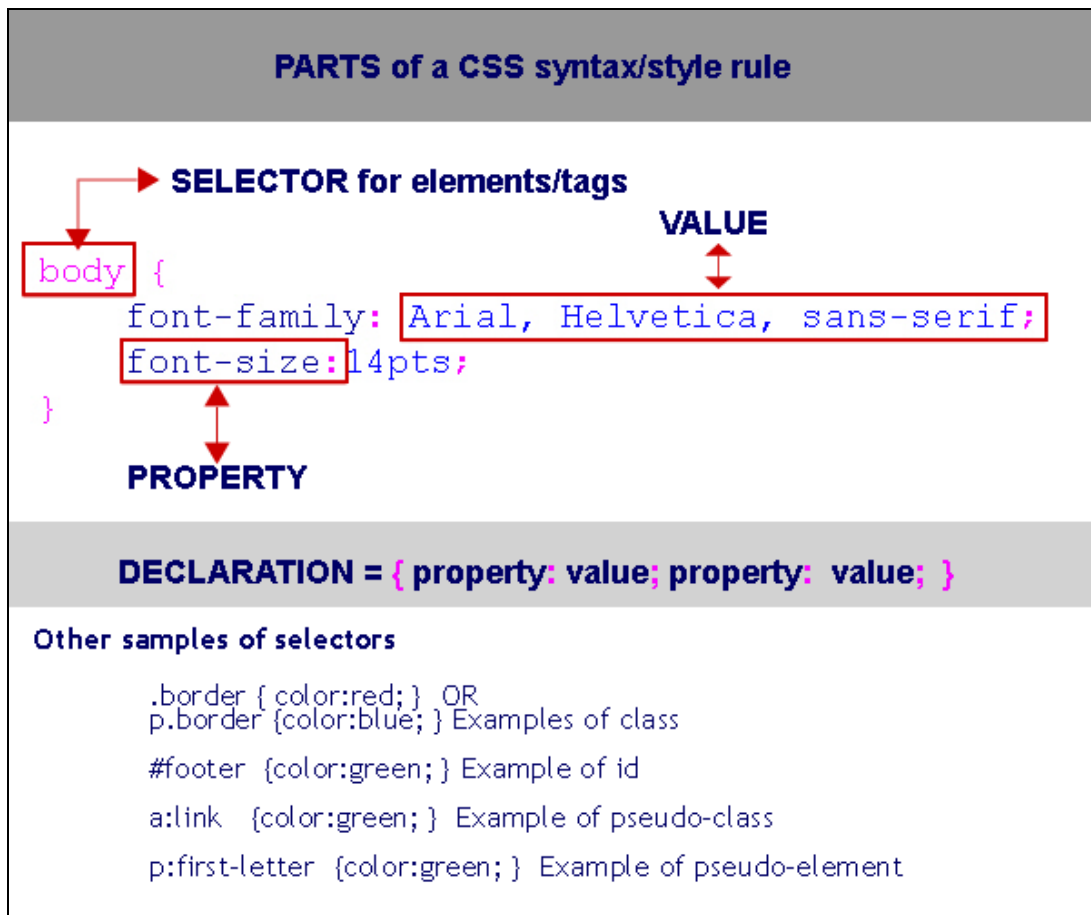
Define the style formatting for the <p> tag and click on OK when completed.



Check you files in your root folder. You should be able to see a document called main.css. Open the document to view/edit the CSS codes

Your HTML document linked to the CSS document should also contain the following code

```
<head>  
<link href="main.css" rel="stylesheet" type="text/css" />  
</head>
```



Support for CSS – check reference links/text books for current & detailed information
 CSS1 – Supported by all browsers (4.0 and later, IE & Opera 3.x)
 CSS positioning, part of CSS2 – Supported in 4.0 & later

CSS Syntax

Why use comment codes `<!-- -->` ?

Basic syntax:

```
Selector {property1:value; property2:value...}
```

Example of a selector code applied to the `<p>` tag:

```

p {
  font-family: Verdana, Arial, Helvetica, sans-serif;
  font-size: 9pt;
  font-weight: normal;
  color: #000099;
}

```

There are 3 types of CSS applications

1. Linking style sheets (Example p2formatting.html with p1.css & p2.css)

```

<head>
  <link href="stylesheetName.css" rel="stylesheet" type="text/css" />
</head>

```

- i. Has file extension *.css; contains no HTML code
- ii. More than one style sheet can be attached to a single page; styles will be processed in sequence. The latter will take precedence of the codes where there are repetitions

2. Embedded style sheets (Example p1formatting.html)

```

<head>
  <style type="text/css">
    list of styles
  </style>
</head>

```

- i. CSS code is embedded within the head and style tag

- ii. Use embedded style sheet if formatting is uniquely different from external sheet
- iii. To convert an embedded style sheet to external style sheet - Copy/Paste OR Export embedded style sheet, remove <style> tags and save document as external style sheet with extension *.CSS

3. Inline styles

<p style="property: value; >Formatted text</p>

- i. Use inline style rules to a single tag that is unique or when a style sheet cannot be embedded/linked such as a template (to be discussed later).
Least desired method of CSS application. Note that the style attribute has been deprecated in the XHTML specifications

Cascading Order (Style elements closest to the HTML takes precedence)

The order of precedence rules for CSS are as follows

- Inline style attributes take precedence over embedded style tags
- Embedded style tags take precedence over linked style sheets
- Attached style sheets – the last document attached takes precedence

Examples of selectors

SELECTOR	Example	Description
[Tag]	<p>; or <h1>	Any name tag
Group	p, td, li	Multiple tag names in a comma-delimited list that have the same style
Contextual	td p strong	Nesting of tags, descendant selectors, example strong is nested in a table data cell within a paragraph
Custom class	.subp { font-family: Verdana; font-size: 9pt; font-weight: bold; color: #CC0000; background-color: #CCCCCC; }	Rule is applied to Attribute Class="classname" CLASS is used for multiple instances or tags. Example <p class="subp">.....</p> or ... for selected text
ID	#footer	Rule is applied to the element that has the attribute id="[IDName]" ID is for single instances or tags. It is also used for identifying particular elements for scripting (such as JavaScript or XML) than for applying styles. It is also applied where styles are specific for layers
Pseudo-class	a:link; a:visited; a:hover; a:active	Rule is applied to an element of a particular state (may not be viewable at its current state) Example – hyperlinks.
Pseudo-element	p:first-line	Rule is applied ONLY to a portion of the element, example first letter of the block Seldom used

Descendant selectors (See Example p2formatting.html)

Inheritance

Child objects are created by tags nested inside of other tags <table><tr>...</tr></table>. The nested element, "child" inherits the style properties of the parent element in addition to their own. If the styles conflict, the nested element take precedence over those of the parent.

Note: There are some elements that cannot be inherited. Example: background-image.

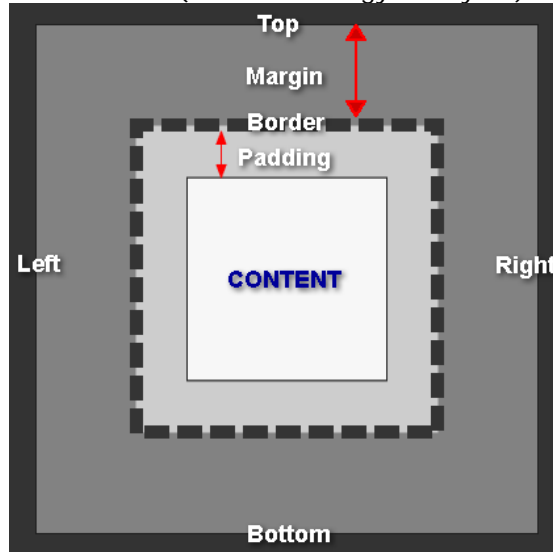
Inline {display:inline;} versus Block {display:block;}

DIV versus SPAN tags (See Example divspan.html)

Both tags have similar functionality. However, div tags are used for blocked sections of codes, while span tags are used for sections of text in a paragraph.

Formatting with Border, Margin and Blocks (See examples boxModel.html)

Box Model (CSS terminology for layout)



Measurement & Colors in CSS – See CSS reference page 8

Floats & Clear (See example float.html & bgimage.html)

Example of inline codes:

```
<p style="float: left">....</p>; <p style="float: right">....</p>; <p style="float: none">....</p>;  
<p style="clear: left">....</p>; <p style="clear: right">....</p>; <p style="clear: both">....</p>;  
<p style="clear: none">....</p>
```

Shorthand coding

Borders

border: <width> <style> <color>

Example .border1 { border: 10px solid #FF0000; }

Margins

Margin: <top> <right> <bottom> <left>

Example p { margin: 10px 10px 10px 10px; }

Padding

Margin: <top> <right> <bottom> <left>

Example td { padding: 10px 10px 10px 10px; }

Font

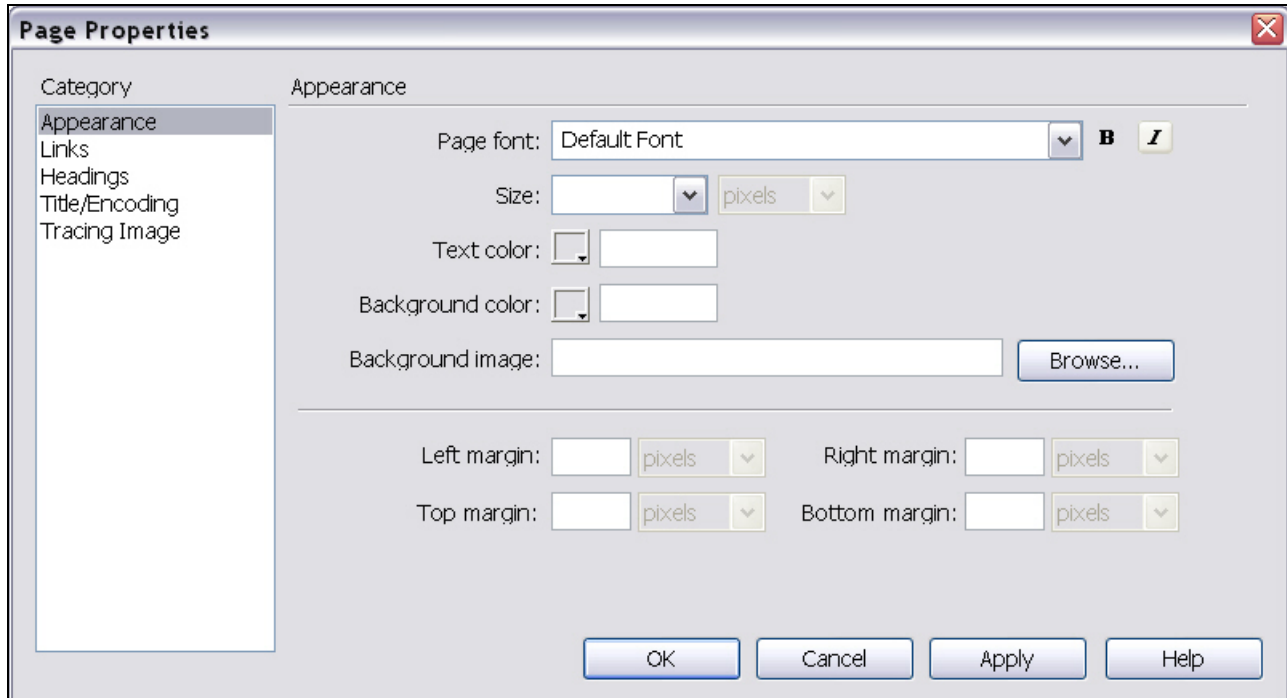
Font: <style> <variant> <weight> <size>/<line-height> <font-family>

Example p { font: italic bold 9pt/14px serif; }

Formatting page properties with Dreamweaver 8 (See example: bgimage.html)

Page titles, background images and colors, text and link colors, and margins are basic properties of every web document. You can set or change page properties using the Page Properties dialog box. Select the property inspector panel>Click on page property>The page property panel (see below) will pop up, and you can enter the information in each field.

Dreamweaver by default will code the page property as an embedded style. You can always go to code view to edit the CSS codes or click on Window>CSS Style>Edit the style by selecting each tag (See p3).



Title/Encoding

Reminder: The title of an HTML page helps site visitors keep track of what they're viewing as they browse, and it identifies the page in the visitor's history and bookmark lists. If you don't title a page, the page will appear in the browser window, bookmark lists, and history lists as *Untitled Document*.

Understanding document encoding

Document encoding specifies the encoding used for characters in the document. Document encoding is specified in a meta tag in the head of the document; it tells the browser and Dreamweaver how the document should be decoded and what fonts should be used to display the decoded text.

For example, if you specify Western European (Latin1), this meta tag is inserted: `<meta http-equiv="Content-Type" content="text/html; charset=iso-8859-1">`. Dreamweaver displays the document using the fonts you specify in Fonts Preferences for the Western European (Latin1) encoding; a browser displays the document using the fonts the browser user specifies for the Western European (Latin1) encoding.

If you specify Japanese (Shift JIS), this meta tag is inserted: `<meta http-equiv="Content-Type" content="text/html; charset=Shift_JIS">`. Dreamweaver displays the document using the fonts you specify for the Japanese encodings; a browser displays the document using the fonts the browser user specifies for the Japanese encodings.

Source information for lecture:

1. Macromedia Dreamweaver 8 – Certified Developer Guide
2. Macromedia Help Section (Application software)
3. XHTML by Mike McGrath
4. http://www.w3schools.com/css/css_reference.asp